


RESEARCH

Open Access



# Feasibility study of using high-throughput drug sensitivity testing to target recurrent glioblastoma stem cells for individualized treatment

Erlend Skaga<sup>1,2\*</sup> , Evgeny Kuleskiy<sup>3</sup>, Marit Brynjulvsen<sup>1,2</sup>, Cecilie J. Sandberg<sup>1</sup>, Swapnil Potdar<sup>3</sup>, Iver A. Langmoen<sup>1,2</sup>, Aki Laakso<sup>4</sup>, Emília Gaál-Paavola<sup>4</sup>, Markus Perola<sup>3</sup>, Krister Wennerberg<sup>3</sup> and Einar O. Vik-Mo<sup>1,2</sup>

## Abstract

**Background:** Despite the well described heterogeneity in glioblastoma (GBM), treatment is standardized, and clinical trials investigate treatment effects at population level. Genomics-driven oncology for stratified treatments allow clinical decision making in only a small minority of screened patients. Addressing tumor heterogeneity, we aimed to establish a clinical translational protocol in recurrent GBM (recGBM) utilizing autologous glioblastoma stem cell (GSC) cultures and automated high-throughput drug sensitivity and resistance testing (DSRT) for individualized treatment within the time available for clinical application.

**Results:** From ten patients undergoing surgery for recGBM, we established individual cell cultures and characterized the GSCs by functional assays. 7/10 GSC cultures could be serially expanded. The individual GSCs displayed inter-tumoral differences in their proliferative capacity, expression of stem cell markers and variation in their in vitro and in vivo morphology. We defined a time frame of 10 weeks from surgery to complete the entire pre-clinical work-up; establish individualized GSC cultures, evaluate drug sensitivity patterns of 525 anticancer drugs, and identify options for individualized treatment. Within the time frame for clinical translation 5/7 cultures reached sufficient cell yield for complete drug screening. The DSRT revealed significant intertumoral heterogeneity to anticancer drugs ( $p < 0.0001$ ). Using curated reference databases of drug sensitivity in GBM and healthy bone marrow cells, we identified individualized treatment options in all patients. Individualized treatment options could be selected from FDA-approved drugs from a variety of different drug classes in all cases.

**Conclusions:** In recGBM, GSC cultures could successfully be established in the majority of patients. The individual cultures displayed intertumoral heterogeneity in their in vitro and in vivo behavior. Within a time frame for clinical application, we could perform DSRT in 50% of recGBM patients. The DSRT revealed a remarkable intertumoral heterogeneity in sensitivity to anticancer drugs in recGBM that could allow tailored therapeutic options for functional precision medicine.

\*Correspondence: erlend.skaga@gmail.com

<sup>1</sup> Vilhelm Magnus Laboratory for Neurosurgical Research, Institute for Surgical Research and Department of Neurosurgery, Oslo University Hospital, P.O. Box 4950, Nydalen, 0424 Oslo, Norway  
Full list of author information is available at the end of the article

**Keywords:** Glioblastoma, Recurrent glioblastoma, Glioblastoma stem cells, High-throughput drug screening, Drug sensitivity and resistance testing, Individualized medicine, Drug sensitivity

## Background

Glioblastoma (GBM) is a devastating form of cancer. Despite multidisciplinary treatment, the tumor almost invariably recurs within 9 months [1, 2]. For the recurrent disease, there are no treatment options documented to prolong survival, possibly leaving enrollment into a clinical trial the best treatment option [3].

The survival benefit of repeated tumor resection in recurrent GBM (recGBM) is limited [4, 5]. Subsequently, only a minority of patients with recGBM undergo secondary surgery [1].

In the newly diagnosed GBM, sphere-forming glioblastoma stem cells (GSCs) derived from tumor biopsies is a well-studied and relevant model system of the treatment-naïve disease [6–9]. There exists, however, limited data of the GSC population in recGBM [10]. The biology of the recurrent disease, which ultimately is the disease the patients succumb to, therefore remains inadequately described. In turn, this leads to a clinical translational gap, as early phase clinical trials in GBM mostly recruit patients with recurrent disease while the foundation of these new treatments almost exclusively are based on treatment-naïve primary GBM models [10].

The intricate tumor heterogeneity at the cellular and molecular level in the treatment-naïve GBM poses a substantial challenge for therapeutic progress on its own [11–14], but even more for treatment of the relapsed disease. Recent studies have described a longitudinal heterogeneity of tumor evolution following therapy, as the selection pressure exerted by standard treatment display tumor-to-tumor variability [15–18]. A fraction of relapsed tumors seems phylogenetically derived from dominant clones in the primary tumors, while others display a highly branched subclonal tumor evolution [15–17]. A minority of tumors develop a treatment-induced hypermutational phenotype at recurrence [19, 20]. Despite established tumoral and evolutionary heterogeneity in GBM, clinical trials are still mostly designed to investigate treatment effects at the population level [21–23].

A therapeutic strategy to address tumor heterogeneity is matching the right drug to the individual patient using genomics-driven profiling. However, genomics-driven oncology for individualized treatments allows clinical decision making in only a small minority of screened patients. Even in the presence of a druggable oncogenic mutation the clinical applicability of targeted therapies has proven difficult [24–26]. Individualized treatments

may also be constructed using functional approaches by automated drug screening technology for testing of hundreds of anticancer compounds directly to a patient's cancer cells ex vivo [27].

We have previously described the intertumoral heterogeneity in patient-specific drug sensitivity patterns in the treatment-naïve GBM [13]. However, the feasibility of translating automated drug sensitivity testing of a patient's cancer cells ex vivo to individualized treatment in solid tumors is immature [28]. This study therefore aimed to establish a bed-to-bench-to-bed clinical translational protocol for individualized treatment in recGBM utilizing patient-specific recGBM stem cell cultures and high-throughput drug sensitivity and resistance testing (DSRT). To evaluate feasibility, we investigated (i) the capability to propagate GSC cultures from recGBM ex vivo, (ii) how tumor heterogeneity in recGBM is reflected in drug sensitivity patterns to a large panel of anticancer drugs, and (iii) whether individualized treatment options can be suggested using automated drug screening and drug sensitivity scoring within a time frame suitable for clinical translation.

## Methods

### Brain tumor biopsies and cell cultures

Glioblastoma biopsies were obtained from ten informed patients with explicit written consent undergoing surgery for recGBM at Oslo University Hospital, Norway, as approved by The Norwegian Regional Committee for Medical Research Ethics (REK 07321b, 2017/167). The cell cultures were established both from several focal tumor biopsies and the ultrasonic aspirate generated during surgery. The cell cultures were established and maintained under tumorsphere forming conditions, as previously described [6]. Differentiation was induced, and the cells were fixed and stained, as previously described [6]. Images were acquired using Olympus Soft Imaging Xcellence software v.1.1. The total number of cells in serial passaging was quantified as previously described [13]. All experiments in this study have been performed within the 10th passage of the individual culture. Patient characteristics are summarized in Additional file 1.

### Definition of time frame of clinical protocol

In cohorts after resection of recGBM the median progression-free survival is reported ranging from 2.0 to 7.8 months [5, 29, 30]. To evaluate the feasibility of using autologous recurrent GSC cultures for individualized

therapy, we defined a fixed time frame of 10 weeks from surgery to complete the entire pre-clinical work up; which included cell culture expansion (6 weeks), DSRT and data analysis (1 week), and treatment initiation (3 weeks).

#### Flow cytometry analysis

Cells were suspended in PBS with 2% fetal bovine serum (Biochrom) and stained with directly conjugated antibodies (CD15-PerCP, R&D Systems, CD44-APC, Thermo Fisher Scientific, CD133-PE, Miltenyi Biotec, CXCR4-PE, Miltenyi Biotec) according to the manufacturer's instructions. Cells were washed three times before analysis by flow cytometer LSRII (BD Bioscience). FlowJo software v.10.4.1 was used for data analysis. Dead cells were excluded by propidium iodine (Thermo Fisher Scientific), and doublets were excluded by gating.

#### Intracranial transplantation

The National Animal Research Authority approved all animal procedures (FOTS 8318). C.B.-17 SCID female mice (7–9 weeks old, Taconic, Ejby, Denmark) were anesthetized with a subcutaneous injection of zolazepam (3.3 mg/mL), tiletamine (3.3 mg/mL), xylazine (0.45 mg/mL) and fentanyl (2.6 µg/mL). The cells were prepared and 2 µL of a single cell suspension containing 100,000 cells/µL was xenografted into the right striatum, as previously described [6]. The animals were regularly monitored for signs of distress and killed by cervical dislocation after 15 weeks or earlier if weight loss >15% or neurological symptoms developed. The brains were harvested and further processed as previously described [6]. Images of brain sections were acquired using Axio Scan.Z1 (Carl Zeiss). Processing of images was performed using ImageJ 2.0.

#### qRT-PCR

RNA was extracted using the RNeasy Micro Kit (Qiagen GmbH) and evaluated by Nanodrop spectrophotometer (Thermo Fisher) and Experion System (Bio-Rad). The high capacity cDNA Reverse Transcription Kit, TaqMan Fast Advanced Master Mix, TaqMan oligonucleotide primers and probes [Hs00157674\_m1 (GFAP), Hs00801390\_s1 (TUBB3)] and the ABI Prism Detection System and software (all from Applied Biosystems) were used according to the manufacturer's instructions. Human β-Actin [Hs999999903\_m1 (ACTB)] was used as housekeeping gene. The thermal cycling conditions were 20 s at 95 °C, followed by 40 cycles of 1 s at 95 °C and 20 s at 60 °C. The relative gene expression levels were calculated using the standard curve method.

#### Subclassification of GSC cultures

Subgrouping of the GSC cultures as proneural or mesenchymal was performed by analyzing RNA sequencing data. The library preparation was performed using the Truseq mRNA protocol according to the manufacturer and the samples sequenced on the Illumina HiSeq platform (paired end 2 × 75 bp). Normalized expression data was further analyzed in J-Express 2012. Unsupervised hierarchical clustering was performed as previously described [13].

#### Drug sensitivity and resistance testing

The oncology drug collection consisted of 525 anticancer compounds and covered most U.S. Food and Drug Administration and European Medicines Agency (FDA/EMA)-approved anticancer drugs and investigational compounds with a broad range of molecular targets. 35% (184/525) of the drugs were of approved status (both oncological and non-oncological indications). 48% (252/525) of the drugs were in clinical investigational phases, and the rest (17%, 89/525) in preclinical investigations. Overview of the drug collection is provided in Additional file 2. The high-throughput DSRT was undertaken using an automated facility at the Institute for Molecular Medicine Finland, University of Helsinki, Finland, as previously described [13]. The cells were transported in L-15 (Lonza) as tumorspheres on ice. The complete drug screening required >10<sup>7</sup> cells. The patient-derived recurrent GSCs were plated at a density of 3000 cells/well in pre-drugged plates and after 72 h cell viability was measured using CellTiter-Glo<sup>®</sup> Luminescent Cell Viability Assay, (Promega), as previously described [13]. The resulting data were normalized to positive (benzethonium chloride) and negative (DMSO) control wells. The quantification of drug sensitivity was utilized by the drug sensitivity score (DSS) [13, 31]. In brief, each drug was evaluated over a 5-point dose-escalating pattern covering the therapeutic range. The resulting dose-responses were analyzed by automated curve fitting defined by the top and bottom asymptote, the slope, and the inflection point (EC<sub>50</sub>). The curve fitting parameters were used to calculate the area defined as area of drug activity (between 10% threshold and 100% relative inhibition to positive and negative control) relative to the total area. To reduce the impact of toxic drug effects, the integrated response was divided by the logarithm of the top asymptote, as previously described [31]. The quantification of drug sensitivity was then calculated into a single measure as the DSS. The DSS ranges from 0 to 50, where higher number translates into increased drug efficacy. The selective drug sensitivity score (sDSS) of each compound was calculated using two independent

reference databases; (i) our in-house GBM drug screening database (up to  $n=18$  GBMs tested for drug sensitivity to the drug collection) and (ii) the FIMM database of drug sensitivity to normal bone marrow cells from healthy donors ( $n=5$ ). Control samples of normal bone marrow cells were obtained from informed and consenting donors, and the sampling was approved by the institutional ethics committee, as previously described [27, 32]. The DSS from which the GBM reference database is based upon is available from previous reports by [13] us together with the additional files presented in this study. The sDSS was quantified as the difference between DSS in the individual sample to the average DSS of GBMs (denoted  $sDSS_{GBM}$ ), and as the difference between DSS in the individual sample to the average DSS of normal bone marrow cells (denoted  $sDSS_{BM}$ ). The selection of reference database is stated in the text when the analysis was applied.

#### Temozolomide treatment

Cells were plated at 5000 cells/well in a 96-well plate (Sarstedt), cultured for 24 h before adding TMZ. The efficacy of TMZ was evaluated over a 5-point dose-escalating pattern covering the therapeutic range (therapeutic range: 5.0–50  $\mu$ M, test range 0.4–250  $\mu$ M) [33]. Cell viability was assessed after 10 days of incubation using Cell Proliferation Kit II XTT (Roche) solution, according to the manufacturer's instructions. The absorbance was analyzed on a PerkinElmer EnVision. The resulting data were normalized to positive (sepantronium bromide) and negative (DMSO) control wells. The resulting dose-response was analyzed by the DSS, as stated above.

#### Statistical considerations

Data analysis and graphic presentation were undertaken using GraphPad Prism 8.0, J-Express 2012 (Molmine), Keynote 9.0.2, Microsoft Excel 14.7.3 and R. Correspondence analysis of drug responses and evaluation of the tumorsphere subgrouping were performed using J-Express 2012 (Molmine). Unsupervised hierarchical clustering and heat maps were generated using J-Express 2012, GraphPad Prism 8.0, and R. Statistical analysis of the overall drug sensitivity between cultures was performed using non-parametric one-way ANOVA of ranks with Kruskal–Wallis test. Correction for multiple comparisons was done by Dunn's test. The correlation analyses were performed using Spearman correlation ( $\rho$ ). A  $p$ -value  $< 0.05$  was considered significant.

## Results

#### Recurrent GBM patient characteristics

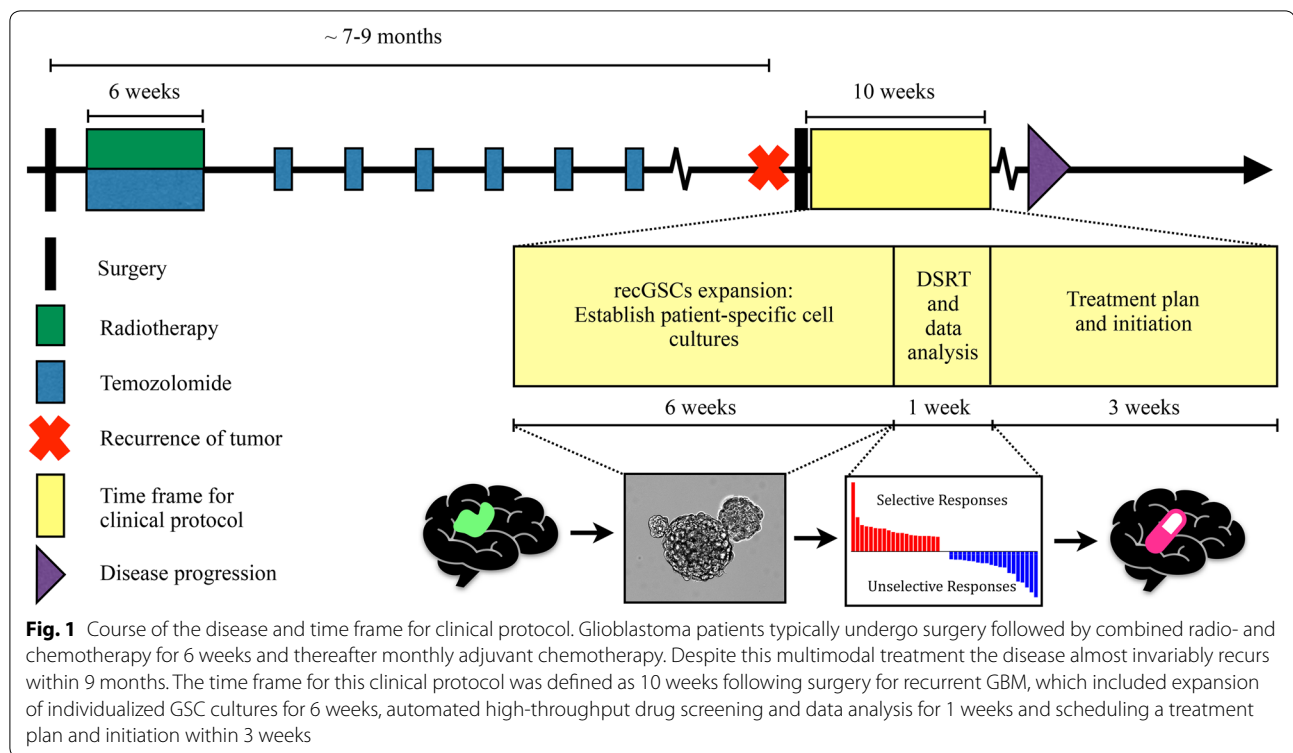
The recurrent GSC (recGSC) cultures were established from ten patients undergoing surgery for recGBM. 9/10

patients had completed standard-of-care treatment for primary GBM consisting of surgery followed by concomitant radiotherapy (RT) and chemotherapy with TMZ and thereafter adjuvant TMZ. One primary tumor (T1532) was at the time of diagnosis classified as an anaplastic oligoastrocytoma, IDH<sup>wt</sup> without 1p/19q loss, that following the recent updated classification of gliomas now would be considered an anaplastic astrocytoma with molecular features of GBM. This patient underwent surgery followed by RT before recurrence of a GBM. One patient (T1615) was included at the third surgery. The median time from primary surgery to tumor relapse was 11.9 months (range: 5.1–23.6). All relapsed tumors were unifocal and recurred within 2 cm of the resection cavity from the primary surgery. Postoperative MRI demonstrated five complete and five subtotal resections with minimal contrast enhancing residual tumor volume. The clinical characteristics are provided in Additional file 1.

#### Preclinical characterization of autologous recurrent GSC cultures

To allow for a wide drug screen, the DSRT required  $10^7$  cells. For translation to patient treatment within 10 weeks, the cell yield had to be sufficient within 6 weeks of culturing (the time frame is schematically outlined in Fig. 1). Seven of the ten cultured recGBM biopsies could be maintained for  $> 10$  serial passages, with six forming tumorspheres and one (T1608) proliferating with adherent morphology. Three samples could not be maintained in culture. Of the seven samples capable of long-term culturing, five reached the pre-determined cell yield within 6 weeks.

To explore stem cell properties of the individual cultures, the recGSC cultures with the capacity for long-term self-renewal ( $n=7$ ) were characterized by functional assays (Fig. 2, Additional file 3). The individual cultures maintained their unique spheroid or adherent morphology upon serial passages (Fig. 2a–c, additional file 3). Within 15 weeks of grafting to immunodeficient mice, invasive intracranial tumors were formed in 6/7 recGSC cultures. The degree of tumor bulk formation and invasive pattern, however, displayed considerable tumor-to-tumor variability (Fig. 2a–c, Additional file 3). Further intertumoral differences were observed in the expression of GSC markers, the total cell yield following serial passaging, in vitro differentiation morphology and in their ability to express glial and neuronal lineage specific markers upon differentiation (Fig. 2a–f, Additional file 3). Similar to GSC cultures from treatment-naïve GBM [13], the recGSC cultures displayed intertumoral heterogeneity in their in vitro and in vivo morphology, while preserving their individual traits, thus representing an individualized model of its parent tumor.



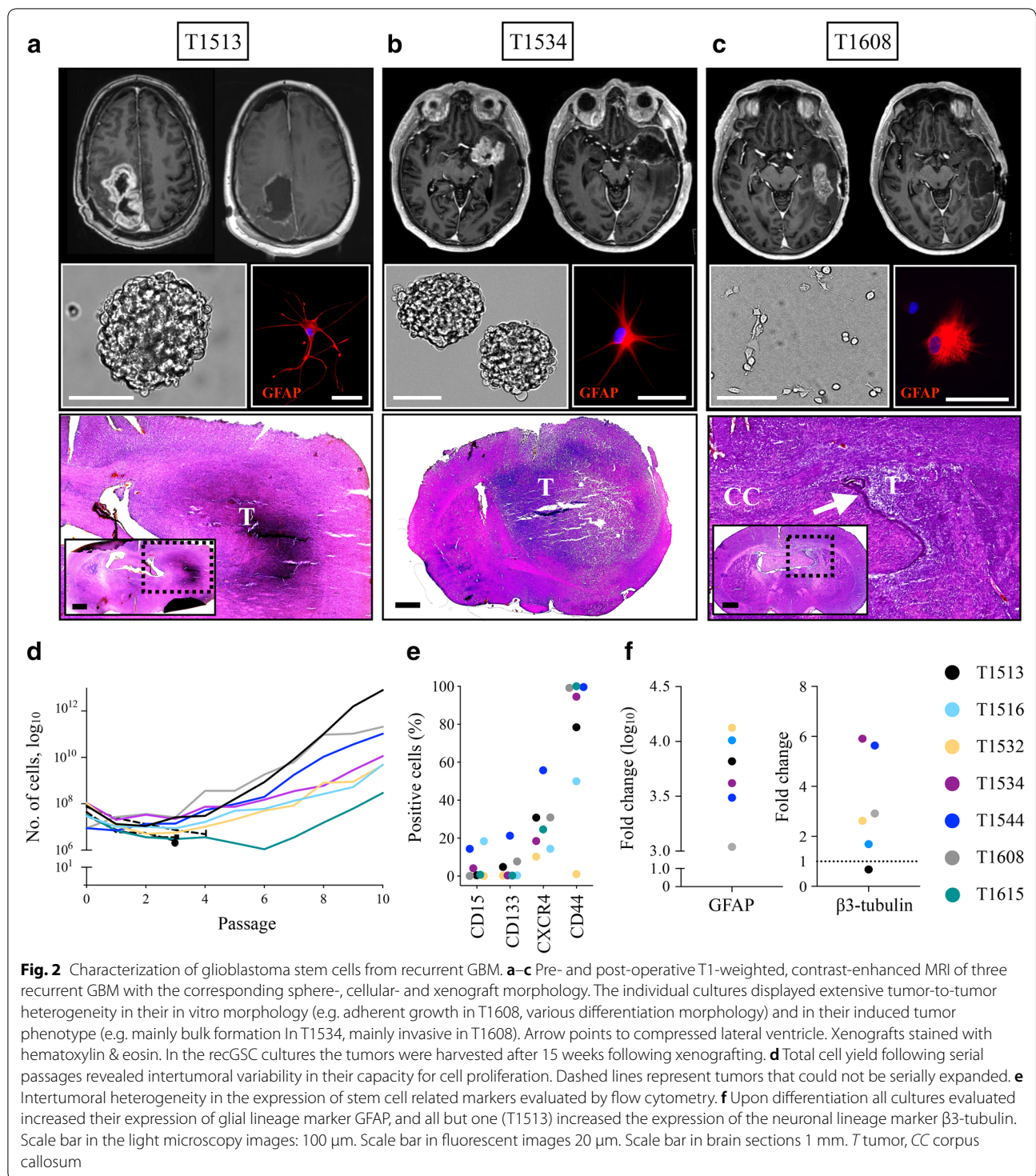
Within the time frame of 6 weeks for expansion, five of seven recGSC cultures had sufficient cell numbers to undergo DSRT. For broader evaluation of drug sensitivity patterns in recGBM, one additional culture (T1532) underwent further culturing to reach adequate cell numbers for DSRT. Median passage number at the time of screening was 4.5 (range: 1–6).

#### Intertumoral heterogeneity in drug sensitivity in recGBM

We next explored whether tumor heterogeneity in recGSC cultures is reflected in the drug sensitivity to anticancer drugs using automated high-throughput technology. We have previously defined a  $DSS \geq 10$  as the threshold to classify a drug response as moderate to strong [13]. In total 148 drugs (28% of the drug collection) displayed this response in the recGSC culture cohort. The median was 63 drugs (range: 52–109) (Fig. 3a, b). Similar to the treatment-naïve disease [13], the sensitivity to any given drug was heterogeneous as 55% (82/148) of drugs with a  $DSS \geq 10$  displayed intertumoral differences equal to a moderate to strong drug sensitivity ( $\Delta DSS \geq 10$ ,  $DSS_{max} - DSS_{min}$ ). The overall sensitivity to the entire drug collection ( $n = 525$ ) significantly differed between the cultures ( $p < 0.0001$ ), and according to overall drug sensitivity the cultures were separated into two major clusters as the most (T1516, T1532, T1534) and the least (T1513, T1544, T1608)

sensitive cultures (Fig. 3c). Correspondence analysis of the drug responses to the entire drug collection ( $n = 525$  drugs) spread the cultures ( $n = 6$ ) along the first component variance (25.6%) according to similar patterns in drug sensitivity. The clustering clearly separated T1516 and T1532 away from T1608. The second component variance (22.9%) clearly separated one culture (T1534) away from the others, however, we could not identify a shared pattern of the clustering.

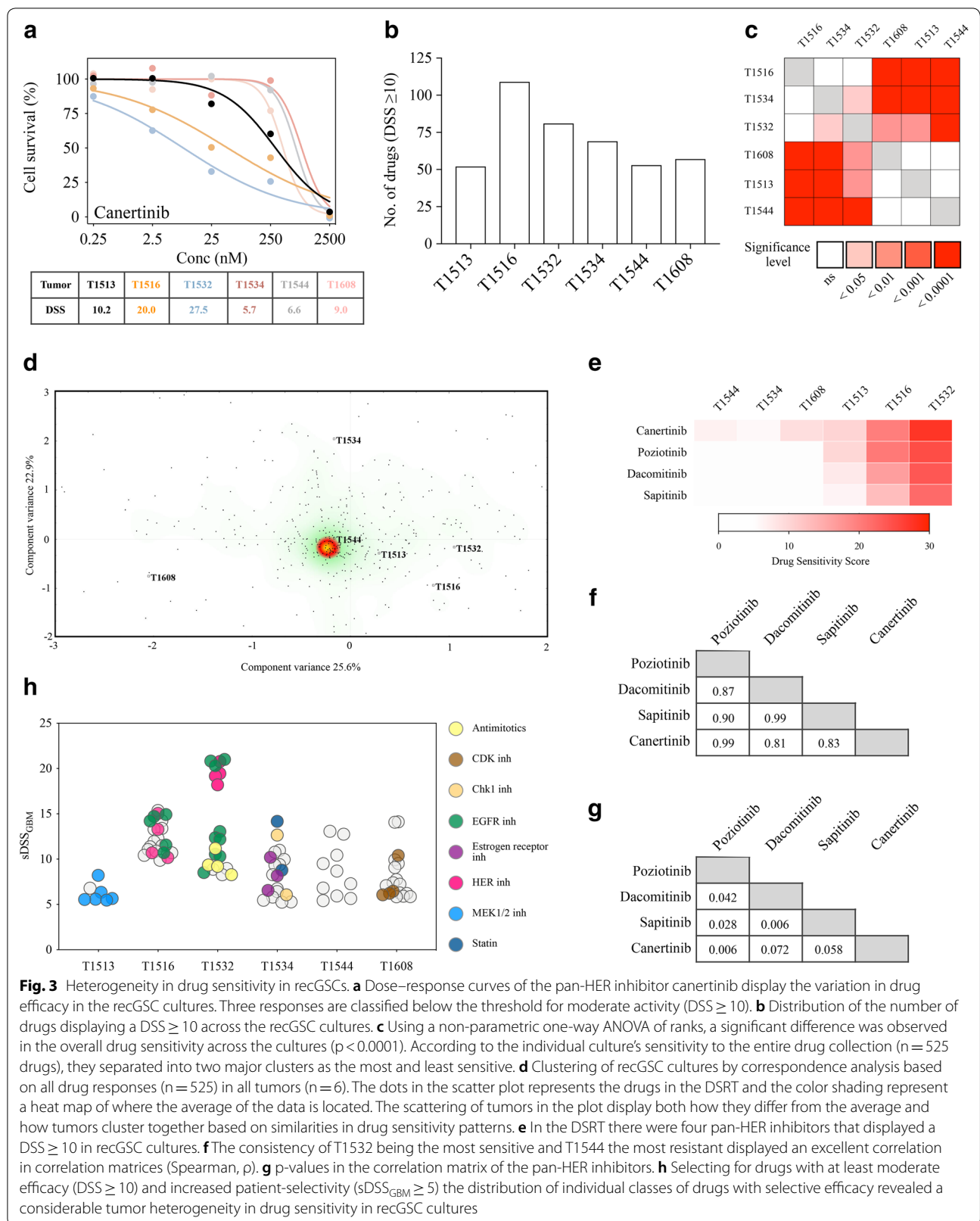
We have previously reported on the biological consistency of the GSC model system in preserving individual drug sensitivity and resistance patterns [13]. The same consistency was found in cultures derived from the recurrent disease (Fig. 3e–g, Additional files 4, 5). For instance, among pan-HER inhibitors ( $n = 4$ ), T1532 was the most sensitive culture to all inhibitors within that class (Fig. 3e). Correlation matrices displayed an excellent correlation (Spearman,  $\rho$ ) with an average ranked correlation ( $\pm$  standard deviation) of pan-HER inhibitors of 0.90 ( $\pm 0.08$ , Fig. 3f, g). The similar pattern was found for drug resistance. While being the most sensitive to pan-HER inhibitors, T1532 was found to be the most resistant culture to CDK inhibitors. The correlation matrices displayed an average correlation ( $\pm$  standard deviation) of 0.82 ( $\pm 0.15$ ) (Additional file 4). These patterns confirmed the findings from the treatment-naïve disease that individual drug sensitivity



and resistance patterns are consistent in the patient-derived GSC culture model.

We next evaluated the overall heterogeneity in patient-specific drug sensitivity according to classes of drugs. Selecting drugs based on  $DSS \geq 10$  (above moderate

efficacy) and  $sDSS_{GBM} \geq 5$  (high patient-specificity), we found a remarkable heterogeneity in the individual recGSC cultures sensitivity to different classes of anticancer drugs. The drugs comprised a variety of classes and mechanistic targets including conventional



chemotherapies (antimitotics), hormone therapies (estrogen receptor inhibitors), metabolic modifiers (statins) and several different kinase inhibitors (CDK-, Chk1-, EGFR-, HER-, and MEK1/2 inhibitors) (Fig. 3h).

After establishing differences in overall drug sensitivity and in individual drug sensitivity patterns in the recGSC culture cohort, unsupervised hierarchical clustering of selective drug responses (by  $sDSS_{GBM}$ ) revealed that the relationship of cultures with similar drug sensitivity patterns was linked to the mechanistic target of the drugs (Fig. 4, Additional files 6, 7).

#### **Sensitivity to temozolomide in recGSCs**

As 6/7 of the recurrent GBM patients had been treated with TMZ, the recGSCs should in principle be TMZ-resistant. This could be used to evaluate the validity of the drug screening. In the DSRT none of the recGSC cultures displayed any sensitivity to TMZ ( $DSS=0$  in all cultures, Additional file 5). To evaluate sensitivity to alkylating agents in clinically relevant concentrations, we and others have previously reported that cell viability assays require longer incubation for adequate evaluation [34, 35]. We therefore performed additional cell viability assays of 10 days incubation using clinically relevant concentrations in the seven recGSC cultures. None of the cultures displayed any sensitivity to TMZ corresponding to at least moderate efficacy. The median  $DSS$  was 1.2 (range: 0.0–6.1). The resistance to TMZ was linked to MGMT gene promoter status. 6/7 cultures were classified as MGMT promoter unmethylated (cut off < 10%), while one culture (T1534) was 79.5% MGMT promoter methylated but still TMZ resistant at recurrence (Additional file 8).

#### **Functional precision medicine for individualized therapy in recurrent GBM**

The heterogeneity in drug sensitivity in recGBM was found in the individual cultures at the level of overall sensitivity, in sensitivity to specific drug classes, and in sensitivity to individual drugs with specific mechanistic targets. The DSRT could therefore identify individualized treatment options in each patient-derived recGSC culture. For individualized therapy selection, we focused on compounds that exhibited at least a moderate drug response ( $DSS \geq 10$ ) combined with a selective drug response ( $sDSS$ ) to the individual patient (Fig. 5a). For patient-specific drug response evaluation, we utilized our in-house reference databases of drug sensitivity (database of drug sensitivity in (i) GBM and (ii) bone marrow cells from healthy donors) to quantify the differential responses (Fig. 5b).

The DSRT revealed remarkable intertumoral heterogeneity in drug sensitivities for individualized therapy

(Fig. 5, Additional file 9). For instance, T1534, which was found as one of the most sensitive cultures to the entire drug collection, and clearly separating along the second component variance in correspondence analysis, had highly patient-specific responses to a diverse range of drug classes including checkpoint kinase 1 inhibitors, estrogen receptor inhibitors and statins (Fig. 5b, c). Additionally, single drug responses from a range of classes and mechanistic targets were identified, e.g. indibulin (conventional chemotherapy), daporinad (metabolic modifier), chloroquine (antimalarial drug/autophagy inhibitor), BAY 87-2243 (HIF1 inhibitor) and several different kinase inhibitors (the PI3K-inhibitor copanlisib and the PAK-inhibitor FRAX486). Several of the patient-specific drug responses were from drugs of approved status (e.g. atorvastatin, chloroquine, clomifene, copanlisib, raloxifene, simvastatin) with potential for fast clinical translation.

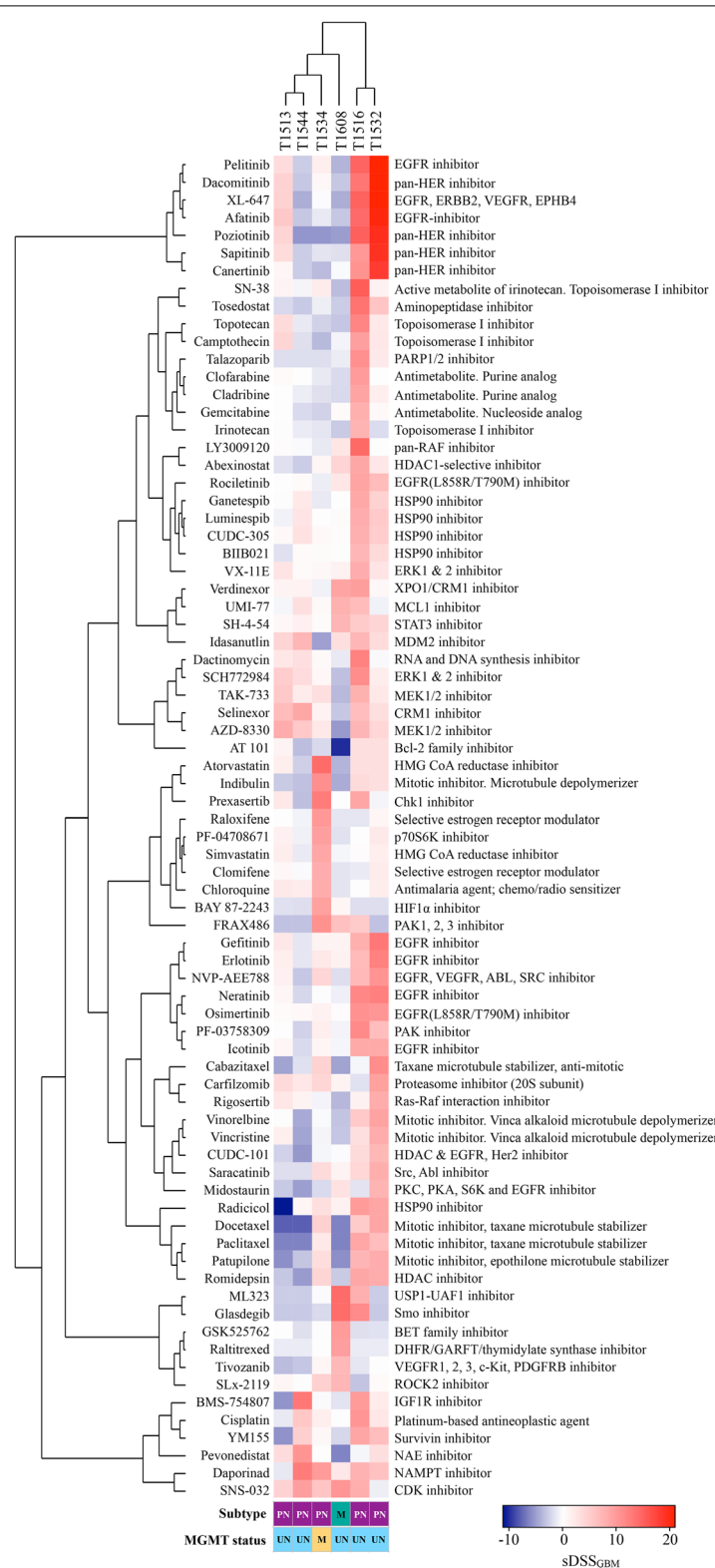
We identified effective ( $DSS \geq 10$ ) and selective (with both  $sDSS_{GBM}$  and  $sDSS_{BM} \geq 5$ ) anticancer drugs with approved status in all recGSC cultures (Fig. 5b–g, Additional files 10, 11). The number of drugs of approved status differed among the cultures, demonstrating that selection of drugs for patient treatment is more complex in certain tumors. Further highly selective drug responses ( $DSS \geq 10$  and both  $sDSS_{GBM}$  and  $sDSS_{BM} \geq 10$ ) of either approved drugs or drugs in clinical developmental phases were found in 5/6 recGSC cultures that underwent DSRT, suggesting potential for patient-specific therapy options with highly selective drugs for functional precision medicine (Fig. 5, Additional file 9).

#### **Discussion**

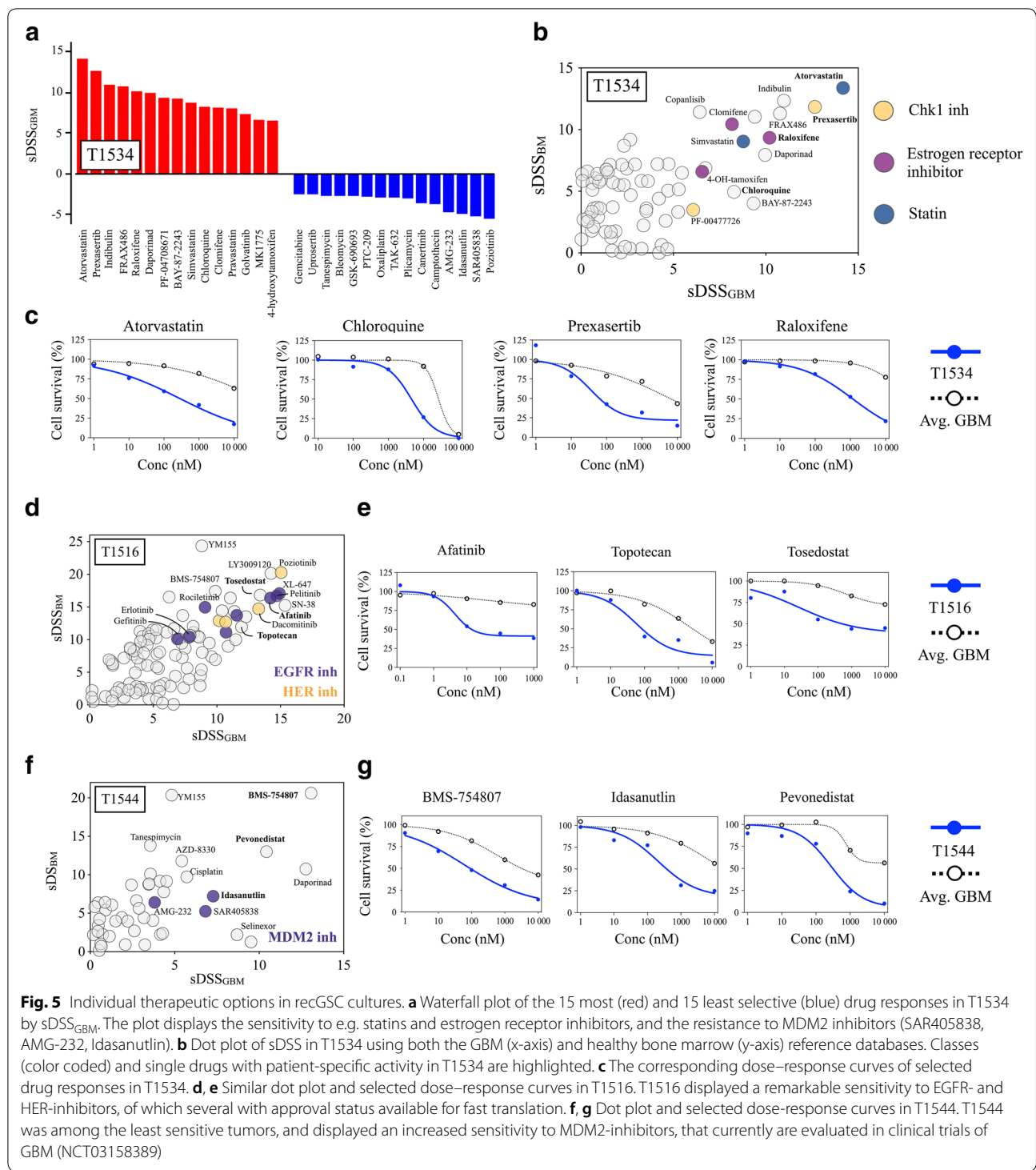
This study demonstrates the feasibility of a bed-to-bench-to-bed clinical translational protocol in recGBM utilizing automated drug screening and autologous recGSC cultures for individualized therapy selection. From surgical biopsies in recGBM, we were able to expand GSCs from 70% of the patients and generate adequate cell numbers from 50% within a clinically acceptable time period. The DSRT revealed patient-specific drug vulnerabilities to single drugs, as well as classes of drugs, with the potential for fast clinical translation. The sensitivity profiles covered a range of drug classes and molecular targets that demonstrated a remarkable intertumoral heterogeneity in drug sensitivity patterns in recGSCs.

The complex heterogeneity in GBM represents a substantial challenge for therapeutic progress. The heterogeneity in primary GBMs have widely been described at the cellular [9], and molecular [11, 12, 14] level, resulting in a heterogeneous clinical picture evident by interpatient differences in tumor growth kinetics [36], response to current therapies and survival [37]. Recent studies have





**Fig. 4** Unsupervised hierarchical clustering of drug sensitivity patterns in recGBM. Heat map and unsupervised hierarchical clustering of patient-specific drug responses ( $sDSS_{GBM}$ ) with Euclidian distance (cultures and drugs). The heat map is filtered by  $DSS \geq 10$  and  $sDSS \geq$  or  $\leq 7$  ( $n = 76$  drugs). *PN* proneural, *M* mesenchymal, *UN* unmethylated MGMT promoter, *ME* methylated MGMT promoter



looked into the biology of the relapsed disease and added new dimensions of heterogeneity by describing tumor-to-tumor variations in evolutionary dynamics of treatment resistant tumor cell populations [15–17]. This translates into a complex intertumoral heterogeneity at the time

of recurrence of GBM. Consequently, targets identified based on analyses of the of the untreated disease may not be informative in treating the heavy-pretreated and relapsed GBM. As expected, we found intertumoral heterogeneity in patient-derived recGSC cultures in their

proliferative capacity, phenotype of xenograft (tumor bulk and invasion patterns), and patient-specific sensitivities to anticancer drugs. Together, this supports the notions that treatment strategies in recGBM should be individualized and must be translated from preclinical studies using material and models from recGBM.

The natural course of recGBM leads to rapid disease progression and clinical deterioration. This makes it challenging to establish a direct clinical translational protocol utilizing time-consuming generation of individualized cell cultures. Inclusion following this protocol is inherently limited to patients eligible for secondary surgery. It has been estimated that up to 30% of recGBM are accessible to undergo secondary surgery [3, 4]. Such estimates, however, are primarily based on studies with a retrospective design. In cohorts of recGBM patients enrolled in clinical surgical trials the fraction of patients undergoing secondary surgery are reported to be considerably higher [2, 5]. This protocol further relies on the ability to successfully establish cell cultures. The success rate has been reported to be as low as 30% and 25% in primGBM and recGBM, respectively [38]. In an operating series, we have previously reported a success rate of establishing cell cultures in >70% of first surgery GBM biopsies [7], which compares similarly to the success rate in establishing individual cell cultures from recGBM in this study. However, as we defined a time frame of 6 weeks for cell culture establishment and proliferation this further selected 50% of the total patient cohort eligible for treatment. There are, however, some adjustable variables in this protocol. The extent of DSRT can be adjusted by reducing the number of drugs (e.g. 17% of the drugs are in preclinical development not available for fast clinical translation). The number of drugs can also be customized to the individual cell culture according to the total cell yield for faster DSRT to allow for a higher fraction of patients to be screened at a lower complexity.

The fixed time frame of 10 weeks for this protocol may seem rigid. After performing 6 weeks of cell culturing and 1 week for DSRT and analysis, this leaves 3 weeks for treatment planning and implementation. The time period was chosen to evaluate the feasibility of finalizing the preclinical work-up for clinical translation in a heterogeneous recGBM population. We acknowledge that some patients experience disease progress within 10 weeks [39]. We may, however, reach enough cells before 6 weeks leading to faster DSRT. Similarly, in patients where the recGSC expansion is slower, the time frame for cell culturing can be expanded if the patient does not experience detrimental disease progression. The preclinical work-up can thus be adjusted for each patient for optimal arrangement.

In our DSRT we found patient-specific sensitivity to a wide range of FDA-approved drugs across different mechanistical classes, such as topoisomerase I inhibitors (e.g. irinotecan, topotecan), EGFR-inhibitors (e.g. afatinib, erlotinib), and estrogen-receptor inhibitors (e.g. clomiphene, tamoxifen). Drugs from these classes have previously been investigated in clinical trials in GBM [40–46]. Overall, the effectiveness of these drugs appears very limited, but usually cases of partial and complete responses are reported. Such responses suggest a heterogeneous pattern in drug sensitivity among patients in clinical trials. In support of clinical variation in drug sensitivities in GBM, the standard-of-care with TMZ display various effectiveness in patients. Sensitivity to TMZ can be predicted by methylation status of the MGMT-promoter [37], and tumors that are IDH-mutated have better survival prospects following standard-of-care treatment [47]. Importantly, however, even in IDH wild-type tumors that have an unfavorable methylation profile (unmethylated MGMT promoter), some patients respond to TMZ treatment as demonstrated by the increased fraction of patients surviving over 2 years after the introduction of TMZ [48]. We have previously reported a heterogeneity of individual drug sensitivity in the treatment-naïve disease that mirrors clinical response patterns [13]. We hypothesize that the ex vivo DSRT model system may identify patients with tumor cells with the highest susceptibility to a drug or class of drugs. However, it is important to consider the limitations ex vivo DSRT presents for drug discovery, as a very simplified model compared to the complex biological system in a patient.

A major challenge in the treatment of tumors of the central nervous system (CNS) is the ability to reach adequate concentrations of the drug within both the tumor and brain parenchyma across the blood–brain barrier (BBB). Penetrability and brain tissue concentrations of anticancer agents are for the vast majority of drugs, including the drugs in this study, unfortunately unknown [49, 50]. Selected compounds, such as alkylating agents (e.g. TMZ), nucleoside analogs (e.g. gemcitabine), topoisomerase inhibitors (e.g. topotecan), and a few kinase inhibitors (e.g. gefitinib, erlotinib), have been evaluated for brain penetrability with varying results [50]. A major limitation in most human studies addressing BBB penetrability is the indirect measurement of brain concentrations levels using cerebrospinal fluid (CSF) concentrations as a surrogate evaluation [50]. Thus, the true concentrations of brain parenchyma levels for the vast majority of anticancer drugs, including TMZ, are inadequately described. Evidence of brain penetrability of anticancer drugs can, however, also be inferred from clinical trials reporting tumor responses in neuro oncological

disorders, such as in primary brain tumors or CNS metastases [43, 51, 52]. Examples include osimertinib in CNS metastases from non-small cell lung cancer [52] and trametinib in metastases from malignant melanoma [53]. The DSRT revealed selective drug responses of compounds with evidence of brain penetrability (for instance afatinib [43], chloroquine [51], osimertinib [52], selinexor [54], trametinib [53], topotecan [41]) in all but one recGSC culture. Importantly, there are further emerging technologies to disrupt the BBB to enhance tissue concentrations of anticancer compounds for drugs with poor penetrability [55].

Intratumor heterogeneity is a major challenge when applying targeted treatment strategies [56]. A single tumor biopsy involves a fraction of the total tumor volume, potentially not capturing more peripheral sub-clones. To maximize clonal diversity, we utilized both tumor core sampling from several focal biopsies along with the ultrasonic aspirate generated during surgery. We utilized low passage cell cultures for DSRT and confirmed the tumorigenicity of tumor cells by orthotopically xenografting to immunodeficient mice. However, the study relies on *in vitro* evaluation of drug sensitivity, as the time frame for clinical translation is not feasible for *in vivo* studies. Furthermore, the DSRT investigates only sensitivities to single compounds. We acknowledge that single compound treatment seems of limited value in recGBM patients [56]. For investigation of drug sensitivities to several hundreds of anticancer drugs the requirement of total number of cells is extensive. Additional investigation of combination therapies would vastly increase requirements of cells along with the complexity of the system, and the major limiting factor in this translational protocol is the number of cells generated in cell culture. It is, however, possible to introduce combination treatments informed by DSRT although their combined effect not have been evaluated *ex vivo*. For successful clinical translation of combinational therapies, the choice of therapy must be carefully undertaken, considering efficacy, biodistribution and interactions.

Although the DSRT identified effective drugs available for clinical translation in all patients, the drug response patterns were remarkably heterogeneous across the recGSC culture cohort. For instance, T1516 and T1532 displayed a high sensitivity to EGFR-inhibitors, whereas EGFR-inhibitors demonstrated very limited efficacy in the remaining tumors. EGFR is a commonly altered gene in GBM that has made it an attractive target for GBM therapy. Results in clinical trials targeting EGFR alterations, even in highly selected patients, have unfortunately presented disappointing results [22]. Translating a genomic alteration into a relevant functional inhibition in a GBM cells [57] or glioma patients [24] is, however, complex.

Results from the DSRT of both the untreated disease [13] and the recurrent tumors in this study, have shown consistency in the drug sensitivity patterns across a class of drugs in the individual tumor. Thus, the understanding of biological traits involved in drug sensitivity, such as sensitivity to EGFR-inhibitors, could be further elucidated by combining DSRT with molecular profiling of the individual tumor [28]. Such integration of genomic and functional data has stratified patients with acute myeloid leukemia into a functional taxonomy [27]. A similar approach of correlating genomic profiling to drug responses could strengthen the data presented in this study to more in-depth elucidate the biology underlying drug sensitivity. The aim of the current study was, however, to explore the feasibility of using functional profiling to develop a translational clinical protocol for individualized treatment decisions in recGBM. To create functional taxonomies in GBM would require larger culture cohorts for more robust linkages. An important implication of such analyses would be the ability to create a database that relates drug sensitivity patterns to tumor genetics to identify potential therapies even when only genomic data are available. In turn, that could benefit the fraction of patients where the derived tumor biopsies not adequately proliferate to perform DSRT. It may also be of benefit to inform therapeutic strategies within a shorter time frame, as the current clinical protocol relies in the time-consuming generation of individualized cell cultures.

## Conclusions

In summary, we have established the pipeline for a translational clinical protocol targeting glioblastoma stem cells in recGBM utilizing automated drug sensitivity testing. We found an extensive intertumoral heterogeneity in sensitivity to anticancer drugs in recGBM that mirrors the clinical heterogeneity in drug sensitivity in GBM. This adds experimental evidence to why population-based treatments of targeted therapies seem of limited value in a heterogeneous GBM population. In support for fast clinical translation, we found FDA-approved drugs displaying patient-specific activity in all recGBM cultures to guide individualized treatment decisions. We will further utilize the protocol to translate *ex vivo* DSRT to the patient bedside for functional precision medicine, however, the protocol presented here is readily translatable to other cancers grown as tumorspheres.

## Supplementary information

**Supplementary information** accompanies this paper at <https://doi.org/10.1186/s40169-019-0253-6>.

**Additional file 1.** Patient characteristics. Patient characteristics of which all patient-derived recGSC cultures were obtained.

**Additional file 2.** Drug collection. The drug collection used in this study.

**Additional file 3.** Preclinical characterization of recGSC cultures. MRI, in vitro spheroid and differentiation morphology and the subsequent xenograft upon transplantation of immunodeficient mice. T=Tumor.

**Additional file 4.** Drug sensitivity in recurrent GSCs across different drug classes and molecular targets. The figure displays drug class, the drug sensitivity in recGSC cultures, and average ( $\pm$  SD) Spearman's coefficient ( $\rho$ ) from correlation matrices. The figure displays selected drug categories from different classes to highlight the consistency in similar drug sensitivity patterns in the individual culture to a specific class of drugs.

**Additional file 5.** Drug sensitivity scores. All drug sensitivity scores for recGSCs generated in the study.

**Additional file 6.** Heat map of DSS in all drugs and cultures. Heat map and unsupervised hierarchical clustering of absolute effects (DSS) of the entire drug collection.

**Additional file 7.** Heat map of sDSS in all drugs and cultures. Heat map and unsupervised hierarchical clustering of relative effects (sDSS<sub>GBM</sub>) of the entire drug collection.

**Additional file 8.** Sensitivity to TMZ and MGMT promoter methylation status.

**Additional file 9.** Individualized therapeutic options in recGSCs. Dot plot of sDSS relative to both reference libraries (GBM: x-axis, BM: y-axis) in T1513, T1532 and T1608.

**Additional file 10.** Dot plot of FDA-approved drugs with patient-specific activity in all recGSC cultures. Drugs are filtered by at least moderate efficacy DSS  $\geq$  10 and sDSS<sub>GBM</sub>  $\geq$  3.

**Additional file 11.** Heat map of FDA-approved drugs. Heat map and unsupervised hierarchical clustering of relative effects (sDSS<sub>GBM</sub>) of FDA-approved drugs filtered by DSS  $\geq$  10 and sDSS<sub>GBM</sub>  $\geq$  or  $\leq$  3.

## Abbreviations

BBB: blood brain barrier; CDK: cyclin-dependent kinase; Chk1: checkpoint kinase 1; CNS: central nervous system; DSRT: drug sensitivity and resistance testing; DSS: drug sensitivity score; EGFR: epidermal growth factor receptor; FDA: U.S. Food and drug administration; GBM: glioblastoma; GSC: glioblastoma stem cell; HER: human epidermal growth factor receptor; HTS: high-throughput screening; IDH: isocitrate dehydrogenase; MEK: mitogen activated protein kinase; MGMT: O<sup>6</sup>-methylguanine-DNA methyltransferase; recGBM: recurrent glioblastoma; recGSC: recurrent glioblastoma stem cell; sDSS: selective drug sensitivity score; TMZ: temozolomide.

## Acknowledgements

We are grateful for the technical assistance by Emily T. Palmero, Maria Walewska, Zanina Grieg (Institute for Surgical Research, Oslo University Hospital, Norway), Aija Kytälä and Anne Nyberg (National Institute for Health and Welfare, Finland) in the cell culturing. We are grateful for the technical assistance by the Flowcytometry Core Facility at Oslo University Hospital, The Norwegian Brain Initiative (NORBRAIN) at University of Oslo and the sequencing/microarray services provided by Helse Sør-Øst Genomics and Bioinformatics Core Facility at Oslo University Hospital. The authors would also like to thank Sissel Reinlie, Head of Department of Neurosurgery, and Håvard Attramadal, Director of Institute for Surgical Research, Oslo University Hospital, for creating a great research environment.

## Authors' contributions

Conceived the study and study design: ES, IAL, AL, EGP, MP, KW, EOVM. Collected and handling the samples: ES, EK, MB, EOVM. Designed and conducted experiments: ES, EK, MB, CJS, EOVM. Assisted in bioinformatics analyses: ES, EK, CJS, SP, EOVM. Interpreted the data: ES, EK, CJS, SP, EOVM. Wrote the manuscript: ES, EK, KW, EOVM. All authors read and approved the final manuscript.

## Funding

The study was funded by The Norwegian Cancer Society (GRANT# 144402). The funder solely provided financial support and had no role in designing, conducting, interpretation, or analysis of the data.

## Availability of data and materials

Data from the drug screening of all recurrent GBMs are included in this published article and its additional files. All other data used in the current study are available from the corresponding author on reasonable request.

## Ethics approval and consent to participate

The Norwegian Regional Committee for Medical Research Ethics (REK 07321b, 2017/167) approved all procedures performed in studies involving human participants. Written informed consent was obtained from all individual participants included in the study. The National Animal Research Authority approved all animal procedures (FOTS 8318).

## Consent for publication

Not applicable.

## Competing interests

The authors declare that they have no competing interests.

## Author details

<sup>1</sup> Vilhelm Magnus Laboratory for Neurosurgical Research, Institute for Surgical Research and Department of Neurosurgery, Oslo University Hospital, P.O. Box 4950, Nydalen, 0424 Oslo, Norway. <sup>2</sup> Institute of Clinical Medicine, Faculty of Medicine, University of Oslo, P.O. Box 1112, Blindern, 0317 Oslo, Norway. <sup>3</sup> Institute for Molecular Medicine Finland, FIMM, University of Helsinki, Tukholmankatu 8, 00290 Helsinki, Finland. <sup>4</sup> Department of Neurosurgery, Helsinki University Hospital and Clinical Neurosciences, University of Helsinki, Topeliuksenkatu 5, 00260 Helsinki, Finland.

Received: 3 November 2019 Accepted: 19 December 2019

Published online: 30 December 2019

## References

- Stupp R, Mason WP, van den Bent MJ, Michael WM, Fisher B, Taphoorn MJ et al (2005) Radiotherapy plus concomitant and adjuvant temozolomide for glioblastoma. *N Engl J Med* 352:987–996
- Ringel F, Pape H, Sabel M, Krex D, Bock H, Misch M et al (2016) Clinical benefit from resection of recurrent glioblastomas: results of a multicenter study including 503 patients with recurrent glioblastomas undergoing surgical resection. *Neuro-oncology*. 18:96–104
- Weller M, van den Bent M, Tonn JC, Stupp R, Preusser M, Cohen-Jonathan-Moyal E et al (2017) European Association for Neuro-Oncology (EANO) guideline on the diagnosis and treatment of adult astrocytic and oligo-dendroglial gliomas. *Lancet Oncol* 18:e315–e329
- Nava F, Tramacere I, Fittipaldo A, Bruzzone M, Dimeco F, Fariselli L et al (2014) Survival effect of first- and second-line treatments for patients with primary glioblastoma: a cohort study from a prospective registry, 1997–2010. *Neuro Oncol* 16:719–727
- Suchorska B, Weller M, Tabatabai G, Senft C, Hau P, Sabel MC et al (2016) Complete resection of contrast-enhancing tumor volume is associated with improved survival in recurrent glioblastoma—results from the DIRECTOR trial. *Neuro Oncol* 18:549–556
- Vik-Mo E, Sandberg C, Olstorn H, Varghese M, Brandal P, Ramm-Petersen J et al (2010) Brain tumor stem cells maintain overall phenotype and tumorigenicity after in vitro culturing in serum-free conditions. *Neuro Oncol* 12:1220–1230
- Vik-Mo E, Nyakas M, Mikkelsen B, Moe M, Due-Tønnesen P, Suso E et al (2013) Therapeutic vaccination against autologous cancer stem cells with mRNA-transfected dendritic cells in patients with glioblastoma. *Cancer Immunol Immunother* 62:1499–1509
- Joo K, Kim J, Jin J, Kim M, Seol H, Muradov J et al (2013) Patient-specific orthotopic glioblastoma xenograft models recapitulate the histopathology and biology of human glioblastomas in situ. *Cell Rep* 3:260–273
- Lan X, Jörg DJ, Cavalli FM, Richards LM, Nguyen LV, Vanner RJ et al (2017) Fate mapping of human glioblastoma reveals an invariant stem cell hierarchy. *Nature* 549:227–232
- Campos B, Olsen L, Urup T, Poulsen H (2016) A comprehensive profile of recurrent glioblastoma. *Oncogene* 35:5819–5825

11. Sottoriva A, Spiteri I, Piccirillo SG, Touloumis A, Collins PV, Marioni JC et al (2013) Intratumor heterogeneity in human glioblastoma reflects cancer evolutionary dynamics. *Proc Natl Acad Sci* 110:4009–4014
12. Patel AP, Tirosh I, Trombetta JJ, Shalek AK, Gillespie SM, Wakimoto H et al (2014) Single-cell RNA-seq highlights intratumoral heterogeneity in primary glioblastoma. *Science* 344:1396–1401
13. Skaga E, Kuleskii E, Fayzullin A, Sandberg CJ, Potdar S, Kytälä A et al (2019) Intertumoral heterogeneity in patient-specific drug sensitivities in treatment-naïve glioblastoma. *BMC Cancer*. 19:628
14. Neftel C, Laffy J, Filbin MG, Hara T, Shore ME, Rahme GJ et al (2019) An integrative model of cellular states, plasticity, and genetics for glioblastoma. *Cell* 178:1–15
15. Wang J, Cazzato E, Ladewig E, Frattini V, Rosenbloom DI, Zairis S et al (2016) Clonal evolution of glioblastoma under therapy. *Nat Genet* 48:768–776
16. Kim H, Zheng S, Amini SS, Virk SM, Mikkelsen T, Brat DJ et al (2015) Whole-genome and multisector exome sequencing of primary and post-treatment glioblastoma reveals patterns of tumor evolution. *Genome Res* 25:316–327
17. Kim J, Lee I-H, Cho H, Park C-K, Jung Y-S, Kim Y et al (2015) Spatiotemporal evolution of the primary glioblastoma genome. *Cancer Cell* 28:318–328
18. Schäfer N, Gielen GH, Rauschenbach L, Kebir S, Till A, Reinartz R et al (2019) Longitudinal heterogeneity in glioblastoma: moving targets in recurrent versus primary tumors. *J Transl Med* 17:96–99
19. Hunter C, Smith R, Cahill DP, Stephens P, Stevens C, Teague J et al (2006) A hypermutation phenotype and somatic MSH6 mutations in recurrent human malignant gliomas after alkylator chemotherapy. *Cancer Res* 66:3987–3991
20. Johnson BE, Mazar T, Hong C, Barnes M, Aihara K, McLean CY et al (2014) Mutational analysis reveals the origin and therapy-driven evolution of recurrent glioma. *Science* 343:189–193
21. Stupp R, Taillibert S, Kanner A, Read W, Einberg D, Lhermitte B et al (2017) Effect of tumor-treating fields plus maintenance temozolomide vs maintenance temozolomide alone on survival in patients with glioblastoma. *JAMA*. 318:2306–2311
22. Weller M, Butowski N, Tran DD, Recht LD, Lim M, Hirte H et al (2017) Rindopepimut with temozolomide for patients with newly diagnosed, EGFRvIII-expressing glioblastoma (ACT IV): a randomised, double-blind, international phase 3 trial. *Lancet Oncol* 18:1373–1385
23. Stupp R, Hegi ME, Gorlia T, Erridge SC, Perry J, Hong Y-K et al (2014) Cilengitide combined with standard treatment for patients with newly diagnosed glioblastoma with methylated MGMT promoter (CENTRIC EORTC 26071-22072 study): a multicentre, randomised, open-label, phase 3 trial. *Lancet Oncol* 15:1100–1108
24. Karajannis MA, Legault G, Fisher MJ, Milla SS, Cohen KJ, Wisoff JH et al (2014) Phase II study of sorafenib in children with recurrent or progressive low-grade astrocytomas. *Neuro Oncol* 16:1408–1416
25. Tourneau C, Delord J-P, Gonçalves A, Gavoille C, Dubot C, Isambert N et al (2015) Molecularly targeted therapy based on tumour molecular profiling versus conventional therapy for advanced cancer (SHIVA): a multicentre, open-label, proof-of-concept, randomised, controlled phase 2 trial. *Lancet Oncol* 16:1324–1334
26. Marquart J, Chen EY, Prasad V (2018) Estimation of the percentage of US patients with cancer who benefit from genome-driven oncology. *JAMA Oncol*. 4:1093
27. Pemovska T, Kontro M, Yadav B, Edgren H, Eldfors S, Szwajda A et al (2013) Individualized systems medicine strategy to tailor treatments for patients with chemorefractory acute myeloid leukemia. *Cancer Discov* 3:1416–1429
28. Pauli C, Hopkins BD, Prandi D, Shaw R, Fedrizzi T, Sboner A et al (2017) Personalized in vitro and in vivo cancer models to guide precision medicine. *Cancer Discov* 7:462–477
29. Oppenlander ME, Wolf AB, Snyder LA, Bina R, Wilson JR, Coons SW et al (2014) An extent of resection threshold for recurrent glioblastoma and its risk for neurological morbidity. *J Neurosurg* 120:846–853
30. Sughrue ME, Sheehan T, Bonney PA, Maurer AJ, Teo C (2015) Aggressive repeat surgery for focally recurrent primary glioblastoma: outcomes and theoretical framework. *Neurosurg Focus* 38:E11
31. Yadav B, Pemovska T, Szwajda A, Kuleskii E, Kontro M, Karjalainen R et al (2014) Quantitative scoring of differential drug sensitivity for individually optimized anticancer therapies. *Scientific Rep* 4:5193
32. Brodin BA, Wennerberg K, Lidbrink E, Brosjö O, Potdar S, Wilson JN et al (2019) Drug sensitivity testing on patient-derived sarcoma cells predicts patient response to treatment and identifies c-Sarc inhibitors as active drugs for translocation sarcomas. *Br J Cancer* 120:435–443
33. Ostermann S, Csajka C, Buclin T, Leyvraz S, Lejeune F, Decosterd LA et al (2004) Plasma and cerebrospinal fluid population pharmacokinetics of temozolomide in malignant glioma patients. *Clin Cancer Res* 10:3728–3736
34. Skaga E, Skaga I, Grieg Z, Sandberg CJ, Langmoen IA, Vik-Mo EO (2019) The efficacy of a coordinated pharmacological blockade in glioblastoma stem cells with nine repurposed drugs using the CUSP9 strategy. *J Cancer Res Clin Oncol* 58:256–13
35. Lun X, Wells CJ, Grinshtein N, King JC, Hao X, Dang N-H et al (2016) Disulfiram when combined with copper enhances the therapeutic effects of temozolomide for the treatment of glioblastoma. *Clin Cancer Res* 22:3860–3875
36. Stensj oen A, Solheim O, Kvistad K, H aberg AK, Salvesen  , Berntsen E (2015) Growth dynamics of untreated glioblastomas in vivo. *Neuro Oncol* 17:1402–1411
37. Hegi ME, Diserens A-C, Gorlia T, Hamou M-F, de Tribolet N, Weller M et al (2005) MGMT gene silencing and benefit from temozolomide in glioblastoma. *N Engl J Med* 352:997–1003
38. D'Alessandris Q, Biffoni M, Martini M, Runci D, Buccarelli M, Cenci T et al (2017) The clinical value of patient-derived glioblastoma tumorspheres in predicting treatment response. *Neuro Oncol* 19:1097–1108
39. Lamborn KR, Yung AW, Chang SM, Wen PY, Cloughesy TF, Angelis L et al (2008) Progression-free survival: an important end point in evaluating therapy for recurrent high-grade gliomas. *Neuro Oncol* 10:162–170
40. Vredenburgh JJ, Desjardins A, Reardon DA, Friedman HS (2009) Experience with irinotecan for the treatment of malignant glioma. *Neuro Oncol* 11:80–91
41. Bruce JN, Fine RL, Canoll P, Yun J, Kennedy BC, Rosenfeld SS et al (2011) Regression of recurrent malignant gliomas with convection-enhanced delivery of topotecan. *Neurosurgery*. 69:1272–1279 (**Discussion 1279-80**)
42. Hamer PC (2010) Small molecule kinase inhibitors in glioblastoma: a systematic review of clinical studies. *Neuro Oncol* 12:304–316
43. Alshami J, Guiot M-C, Owen S, Kavan P, Gibson N, Solca F et al (2015) Afatinib, an irreversible ErbB family blocker, with protracted temozolomide in recurrent glioblastoma: a case report. *Oncotarget*. 6:34030–34037
44. Brandes A, Ermani M, Turazzi S, Scelzi E, Berti F, Amist  P et al (1999) Procarbazine and high-dose tamoxifen as a second-line regimen in recurrent high-grade gliomas: a phase II study. *J Clin Oncol* 17:645–650
45. Tang P, Roldan G, Brasher P, Fulton D, Roa W, Murtha A et al (2006) A phase II study of carboplatin and chronic high-dose tamoxifen in patients with recurrent malignant glioma. *J Neurooncol* 78:311–316
46. Touat M, Idbaih A, Sanson M, Ligon K (2017) Glioblastoma targeted therapy: updated approaches from recent biological insights. *Ann Oncol*. 28:1457–1472
47. Yang P, Zhang W, Wang Y, Peng X, Chen B, Qiu X et al (2015) IDH mutation and MGMT promoter methylation in glioblastoma: results of a prospective registry. *Oncotarget*. 6:40896–40906
48. Stupp R, Hegi ME, Mason WP, van den Bent MJ, Taphoorn MJ, Janzer RC et al (2009) Effects of radiotherapy with concomitant and adjuvant temozolomide versus radiotherapy alone on survival in glioblastoma in a randomised phase III study: 5-year analysis of the EORTC-NCIC trial. *Lancet Oncol* 10:459–466
49. Pitz MW, Desai A, Grossman SA, Blakeley JO (2011) Tissue concentration of systemically administered antineoplastic agents in human brain tumors. *J Neurooncol* 104:629–638
50. Jacus MO, Daryani V, Harstead EK, Patel YT, Throm SL, Stewart CF (2015) Pharmacokinetic properties of anticancer agents for the treatment of central nervous system tumors: update of the literature. *Clin Pharmacokinet*. 55:297–311
51. Levy JM, Zahedi S, Griesinger AM, Morin A, Davies KD, Aisner DL et al (2017) Autophagy inhibition overcomes multiple mechanisms of resistance to BRAF inhibition in brain tumors. *eLife*. 6:358
52. Reungwetwattana T, Nakagawa K, Cho B, Cobo M, Cho E, Bertolini A et al (2018) CNS response to osimertinib versus standard epidermal growth factor receptor tyrosine kinase inhibitors in patients with untreated

- EGFR-mutated advanced non-small-cell lung cancer. *J Clin Oncol* 36:3290–3297
53. Davies MA, Philippe SM, Caroline RM, Jean-Jacques GM, Keith FT, Ana et al (2017) Dabrafenib plus trametinib in patients with BRAFV600-mutant melanoma brain metastases (COMBI-MB): a multicentre, multicohort, open-label, phase 2 trial. *Lancet Oncol* 18:863–873
  54. Bobillo S, Abrisqueta P, Carpio C, Raheja P, Castellví J, Crespo M et al (2018) Promising activity of selinexor in the treatment of a patient with refractory diffuse large B-cell lymphoma and central nervous system involvement. *Haematologica* 103:e92–e93
  55. Warren K (2018) Beyond the blood: brain barrier: the importance of central nervous system (CNS) pharmacokinetics for the treatment of CNS tumors, including diffuse intrinsic pontine glioma. *Front Oncol* 8:815–911
  56. Qazi M, Vora P, Venugopal C, Sidhu S, Moffat J, Swanton C et al (2017) Intratumoral heterogeneity: pathways to treatment resistance and relapse in human glioblastoma. *Ann Oncol* 28:1448–1456
  57. Vivanco I, Robins IH, Rohle D, Campos C, Grommes C, Nghiemphu P et al (2012) Differential sensitivity of glioma- versus lung cancer-specific EGFR mutations to EGFR kinase inhibitors. *Cancer Discov* 2:458–471

### Publisher's Note

Springer Nature remains neutral with regard to jurisdictional claims in published maps and institutional affiliations.

**Submit your manuscript to a SpringerOpen<sup>®</sup> journal and benefit from:**

- ▶ Convenient online submission
- ▶ Rigorous peer review
- ▶ Open access: articles freely available online
- ▶ High visibility within the field
- ▶ Retaining the copyright to your article

---

Submit your next manuscript at ▶ [springeropen.com](https://www.springeropen.com)

---